






**DATA, INDICATORS AND TARGETS  
IN SUPPORT OF ITALIAN COHESION POLICY**

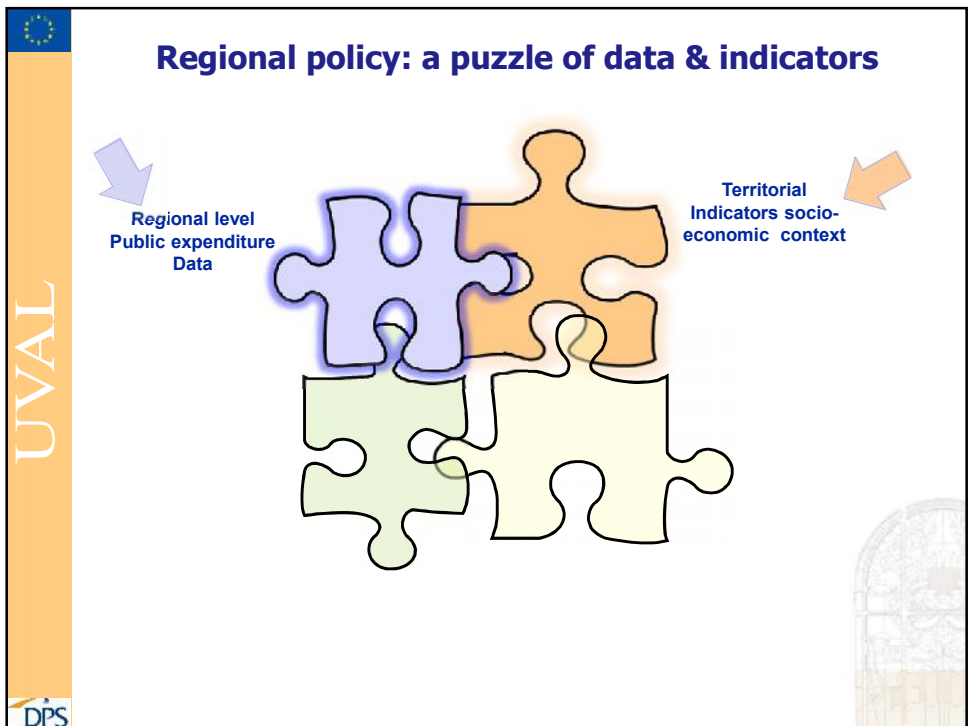
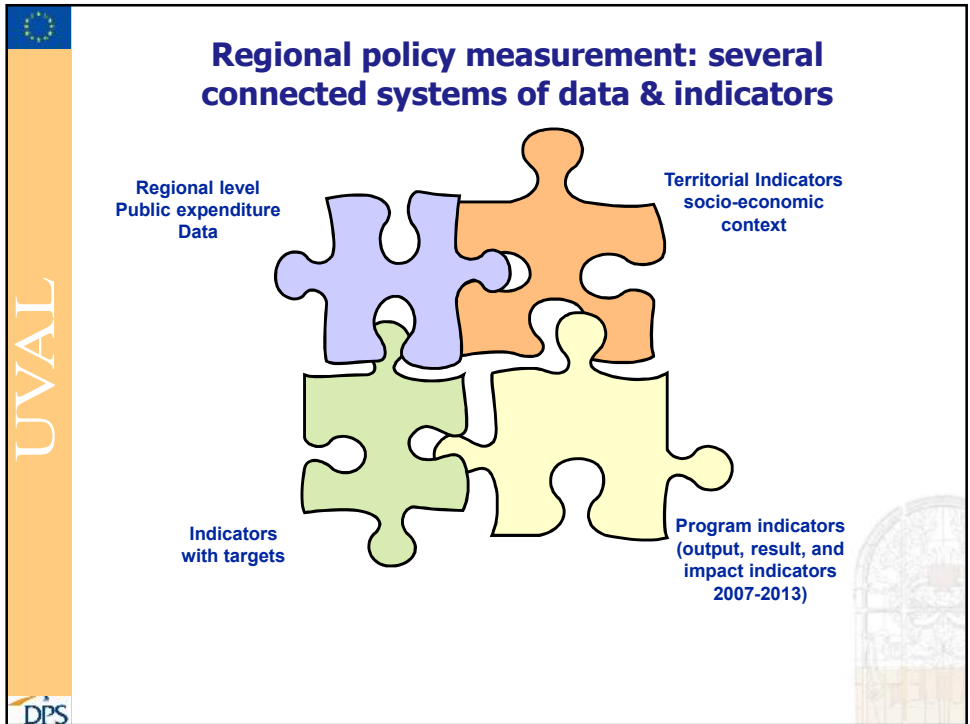
**TITO BIANCHI - SIMONA DE LUCA**  
Public Investment Evaluation Unit (UVAL)  
Italian Ministry of Economic Development

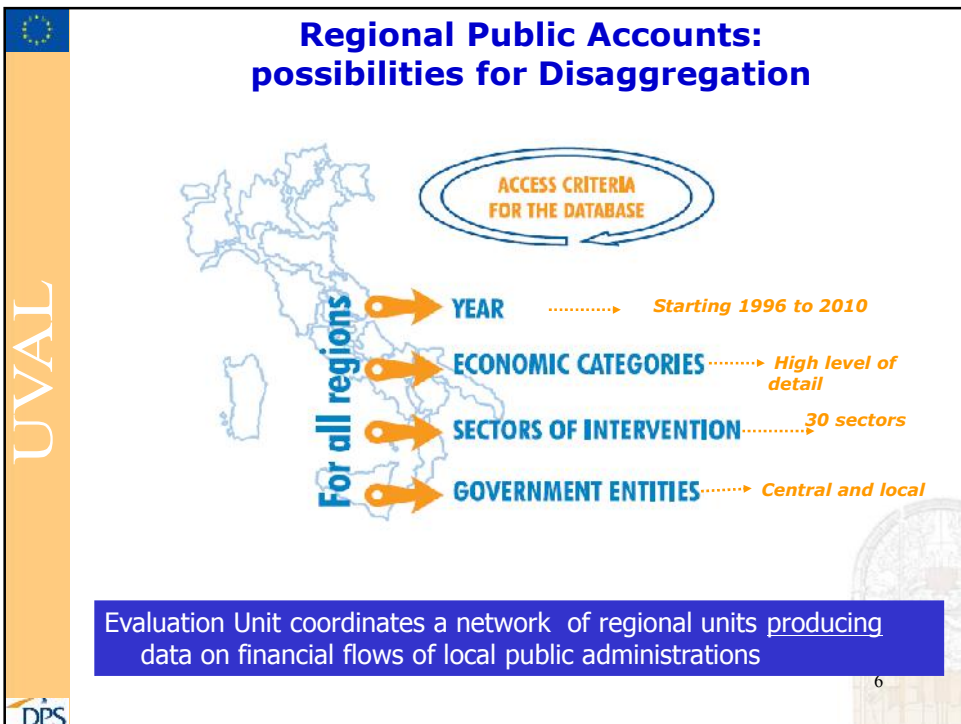
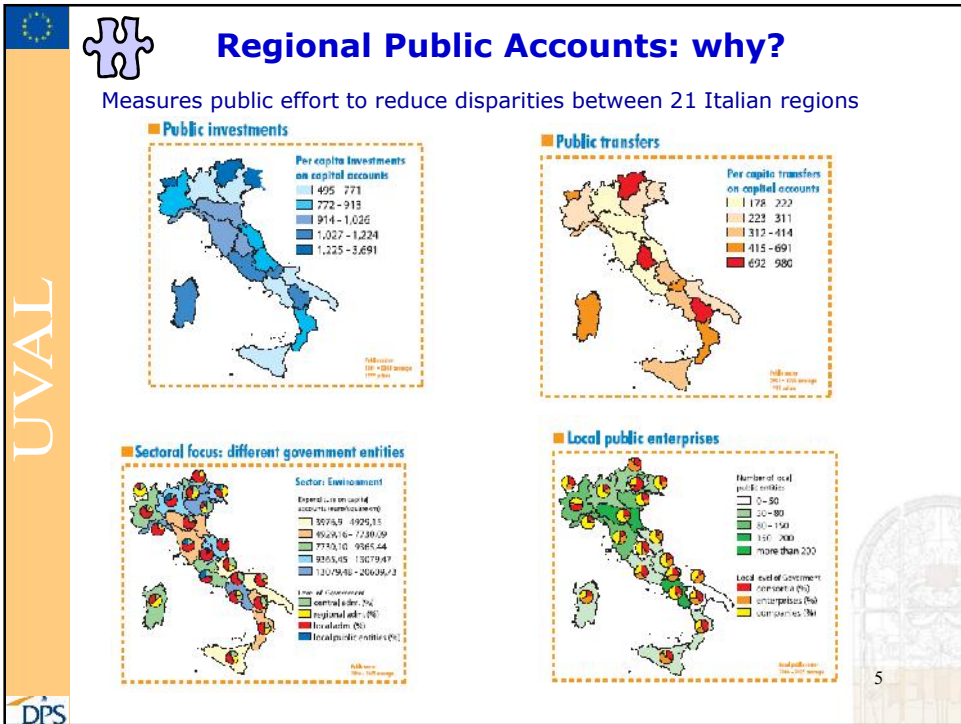
*"Evaluating for 2014-2020: Evidences and Experiences"*  
*Bucharest, 26-27 April 2012*




**General points this presentation  
intends to argue:**

- The quality of measurement systems feeds back into the quality of programs & implementation;
- Measurement of EU investment policy, in itself needs to be invested upon;
- Data systems magnify their impact when they are accessible to the general public.
- Quantitative, result orientation at OP level is welcome, if taken seriously amounts to a revolution





**CONTEXT INDICATORS** 

**FORMAL AGREEMENT with Central Statistical Office (ISTAT) and Other Data Producers**

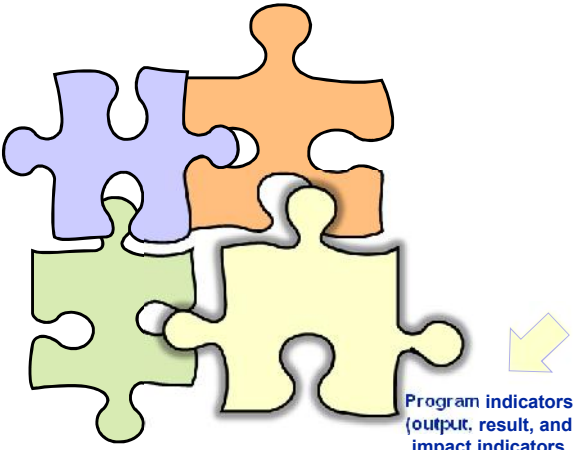
**to ensure timely availability of information at territorial level**

**SOME OUTPUTS ...**



- ✓ [Regional Indicators Database](#) to assess evolving context of development policies (200 indicators constantly updated)
  - ✓ not available at the beginning of 2000-2006 programming period
  - ✓ Co-financed by EU Technical Assistance Programs
- ✓ Statistical Atlas of Municipalities (Atlante Statistico dei Comuni)
- ✓ Data on specific themes at regional and sub-regional level
  - ✓ Water service (Optimal Territorial Areas (ATO) level)
  - ✓ Child care (municipality level)
  - ✓ Elderly care (Level of health service districts (ASL))
  - ✓ Urban Waste (municipality level)

.....

**Regional policy: a puzzle of data & indicators**







Program indicators  
(output, result, and impact indicators  
2007-2013)

**2007-2013 PROGRAM-LEVEL INDICATORS**

UVAL

- ✓ lists of indicators Recommended to be Short (output, outcome, and impact)
- ✓ Ownership (not a compliance)
- ✓ Desirable requirements: measurability, accountability, responsive to policy
- ✓ Difficulties in translation of qualitative values (actions) into quantitative values (measurement of impacts and results)
- ✓ Output indicators: a compulsory set linked to projects: What do we buy with regional policy?


**2007-2013 PROGRAM-LEVEL INDICATORS**



UVAL

**OUTPUT INDICATORS**

**Centralized Monitoring System**  
 managed by State General Accounting Dept. (Ministry of Economy), includes Financial – Procedures – **OUTPUT**  
 - working group with DPS (Ministry of Economic Development), State General Accounting Dept. (Ministry of Economy), Regional & Central Managing Authorities defined the system

**for each project**  
 - two compulsory indicators (physical output & employment)  
 - indicators to be selected from a closed list of 41  
 - indicators required for each project depend on sectoral & economic classification

 **Utility DPS :**  
<http://sinitweb.tesoro.it/Indicatori/>

**Cohesion policy: a puzzle of data & indicators**

Special sets of indicators with targets

UVAL

DPS

**SPECIAL SETS OF INDICATORS WITH TARGETS**

**WHAT TARGETING ENTAILS**

INDICATOR as measurement of an objective to be met

TARGET as the expression of achievable change

Different ways to reach the goals

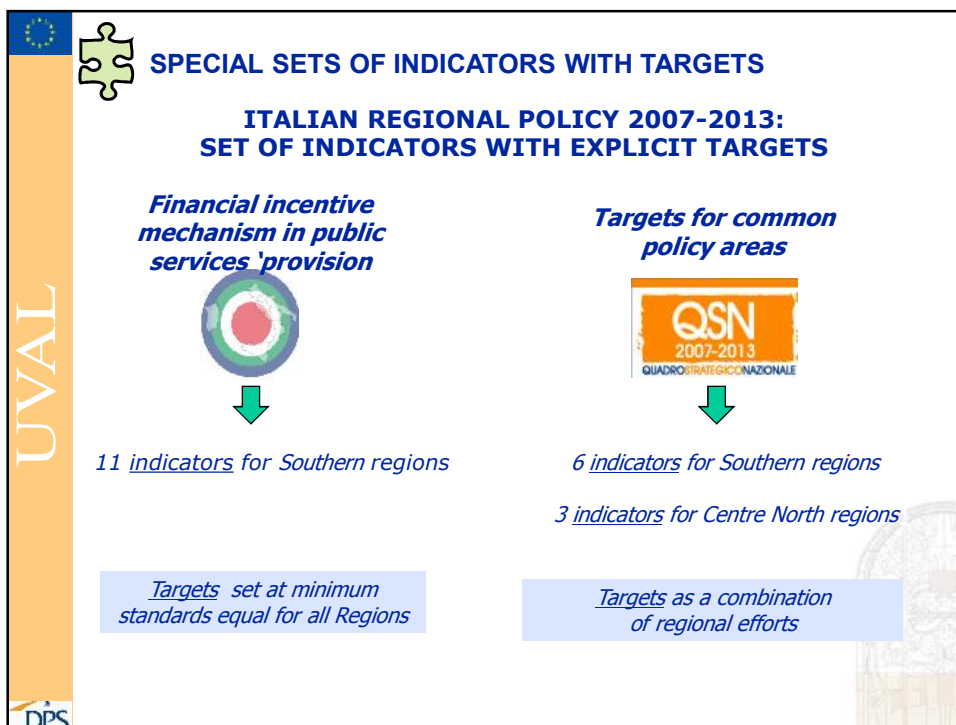
- ✓ Help focus priority policy issues
- ✓ Reinforce Commitments
- ✓ Strengthen the delivery of results
- ✓ Improve understanding of implementation issues

**CRITERIA TO SELECT INDICATORS AND TO SET TARGETS**

- ✓ Measurable
- ✓ Easy to interpret
- ✓ Visible to citizens
- ✓ Relevant for stakeholders
- ✓ Coming from Reliable (independent) statistical source
- ✓ Chain of responsibilities to attain the objective
- ✓ Agreed upon with the main actors involved

UVAL

DPS





UVAL

DPS

## OBIETTIVI DI SERVIZIO

€3 Billion to be distributed between 7 Regions + Ministry of Education in proportion to the achievement in 2013 of agreed targets

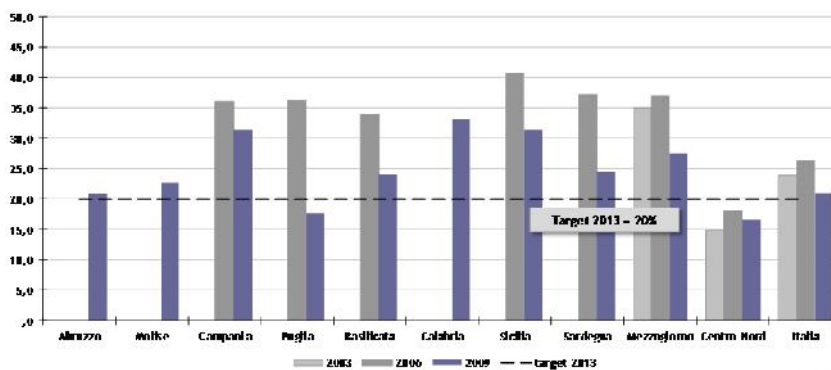
POLICY AREA/ OBJECTIVE	INDICATOR	Centre-North		Mezzogiorno		Target 2013
		Revenue Value	Lost available value	Revenue Value	Lost available value	
Improve students competencies, reduce inequalities and broaden population's learning opportunities	% Early school leavers	16,0	16,2	25,5	22,0	Reducing the percentage to 10%
	% Students with poor competency in reading	14,0	16,6	25,0	27,5	Reducing the percentage to 20%
	% Students with poor competency in mathematics	19,0	19,5	47,5	33,5	Reducing the percentage to 21%
Increase the availability of child and elderly care to favour women's participation in the labour market	% Municipalities with children	47,6	52,7	21,1	35,0	Increasing the percentage to 35%
	% Children in child care	15,5	15,9	4,2	5,2	Increasing the percentage to 12%
	% Elderly beneficiary of home assistance	3,5	4,0	1,6	2,8	Increasing the percentage to 3,5%
Protect and improve the quality of the environment, in relation to urban waste management	Kg of urban waste landfilled	203,8	210,0	395,3	347,8	Reducing the amount to 200 Kg per head
	% of recycled urban waste	31,6	40,1	8,8	10,1	Increasing the percentage to 40%
	% Percentage of unrecycled waste	29,1	47	2,6	10,4	Increasing the percentage to 20%
Protect and improve the quality of the environment, in relation to integrated water service	% of water distributed	71,5	71,9	59,4	60,3	Increasing the percentage to 75%
	% Population served by advanced waste water treatment plants	77,6	81,0	62,5	66,4	Increasing the percentage to 70%



UVAL

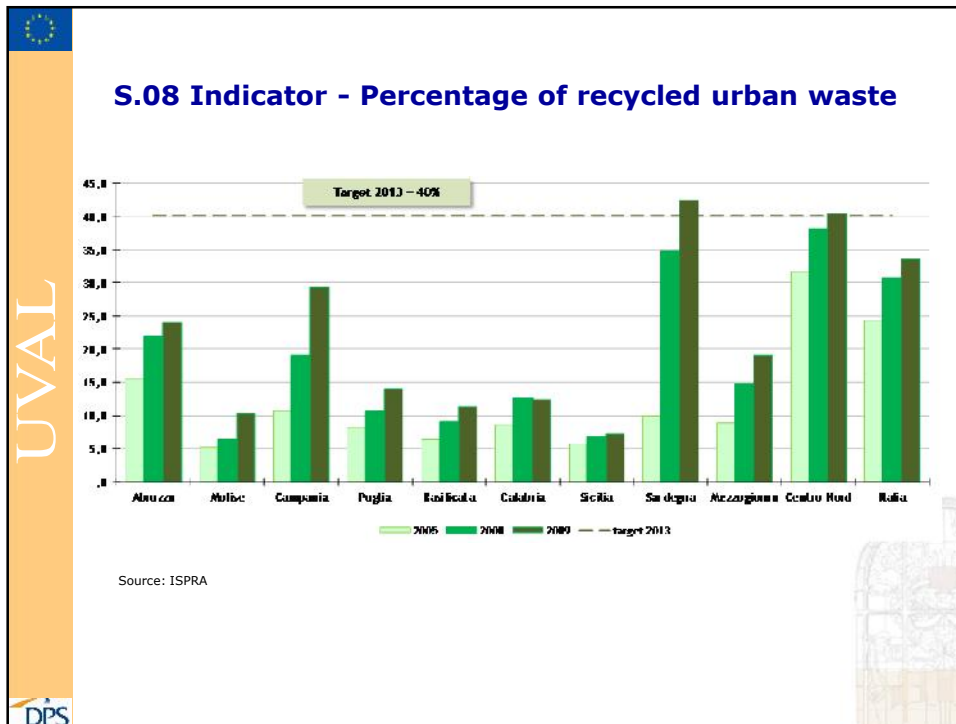
DPS

## S.02 Indicator - Percentage of students with poor competency in reading



Source: OECD- PISA

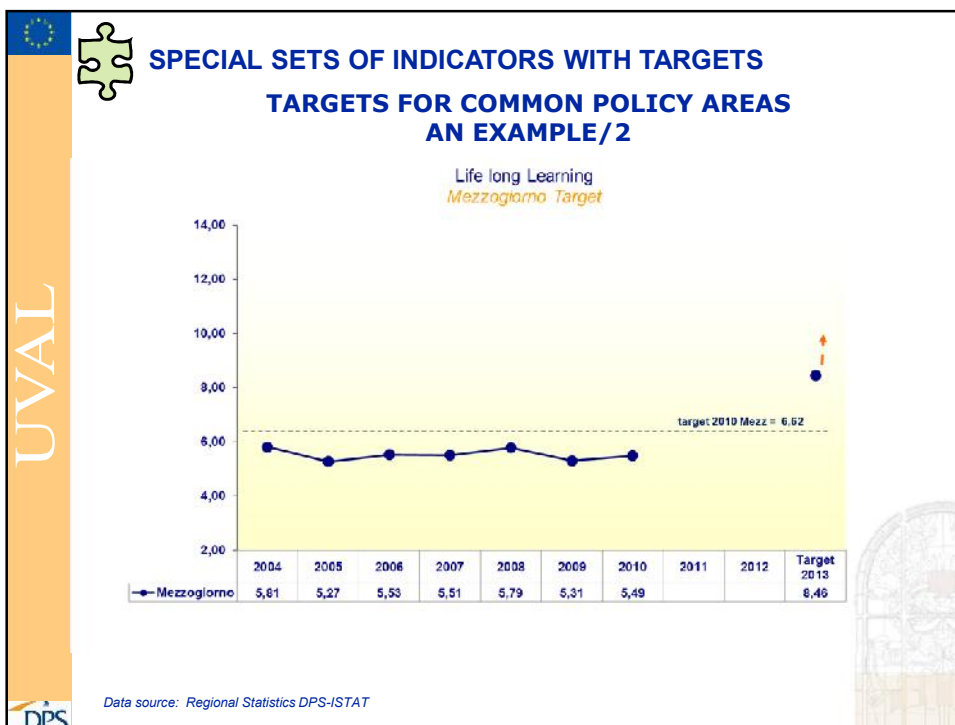
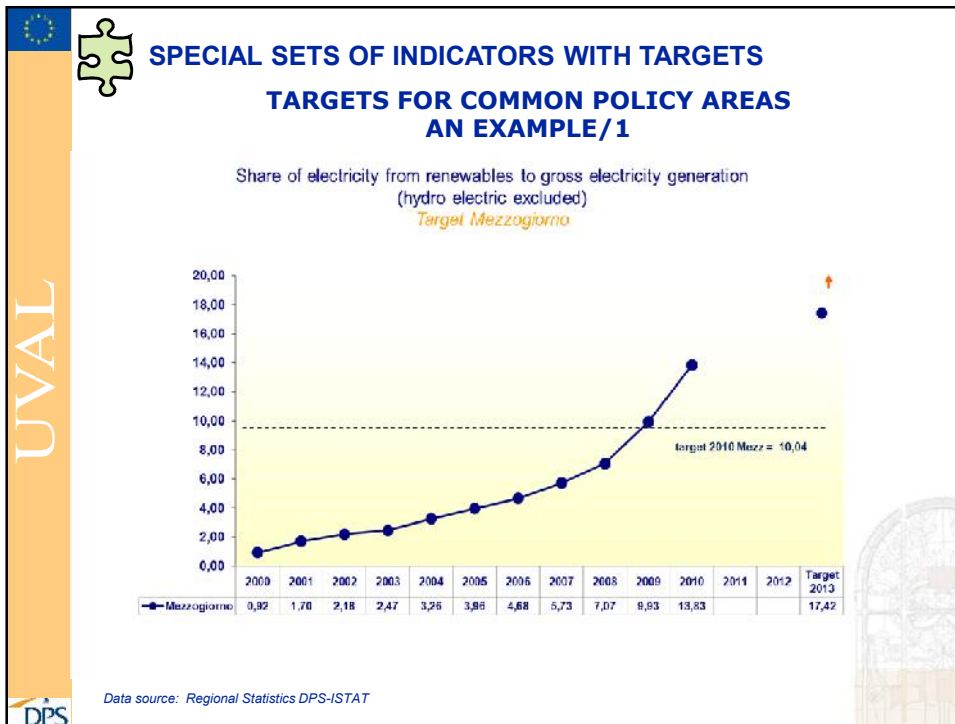




**SPECIAL SETS OF INDICATORS WITH TARGETS**  
**TARGETS FOR COMMON POLICY AREAS**

Indicator	Intended direction	Target areas	NSRF value /Target	Convergence objective	South	Regional competitiveness and employment objective	Centre North
Km of sea coasts not accessible for pollution	↓	South	NSRF value (2005)	7,3	6,2		
			target 2013	4,8	4,3		
Tourism in off-season months	↑	South	NSRF value (2005)	0,97	1,02		
			target 2013	1,36	1,44		
Life long learning	↑	South & Centre North	NSRF value (2006)	5,4	5,5	6,4	6,4
			target 2013	8,2	8,5	7,9	7,9
Private R&D expenditure (as a % of GDP)	↑	South & Centre North	NSRF value (2004)	0,24	0,24	0,59	0,62
			target 2013	0,40	0,38	1,24	1,33
Percentage of workers employed in the informal sector	↓	South	NSRF value (2004)	19,2	19,2		
			target 2013	17,6	16,8		
Share of electricity from renewables to gross electricity generation (hydro electric excluded)	↑	South & Centre North	NSRF value (2005)	4,1	4,0	3,9	3,9
			target 2013	18,7	17,4	7,5	6,9

Data source: Regional Statistics DPS-ISTAT



**Data, indicators are NOT evaluation**

- ✓ Data availability is a critical element for evaluation processes
- ✓ A broad and complete spectrum of indicators and statistics with a detailed regional breakdown supports planning and evaluating territorial policies

Indicators provide information to be interpreted

Identification of indicators can be the result of evaluation activities

Indicators help in managing performance

Programme cycle

**Data accessibility**

- ✓ innovative tools to explore indicators in order to measure performances of public administrations
- ✓ intensive use of web-based applications whereby the user can produce contents, give direct feedback, be a member of a network
- ✓ Opendata (data freely available to everyone to use and republish) → a powerful tool to foster governmental transparency and accountability

**Data accessibility: innovative tools**

UVAL

Table

Chart

Map

Story

Wiki

Region	Budget	Actual	Diff.	Costs	Performance
Emilia-Romagna	100	95	-5	95	95%
Liguria	100	98	-2	98	98%
Lombardia	100	99	-1	99	99%
Piemonte	100	97	-3	97	97%
Puglia	100	96	-4	96	96%
Valle d'Aosta	100	99	-1	99	99%
Veneto	100	98	-2	98	98%
Altre Regioni	100	97	-3	97	97%
<b>Totale</b>	<b>1000</b>	<b>975</b>	<b>-25</b>	<b>975</b>	<b>97.5%</b>

**Data accessibility: a web 2.0 tool to explore data**

UVAL


**DPS explorer**

Makes it possible to analyze and compare the performance of local administrations on the themes linked to the incentive mechanism

Among its main features:

- interactive exploration of multiple indicators
- time animation
- stories: users can contribute with their own narratives and analyses
- integration with user data

Available at:  
[www.dps.tesoro.it/DPSExplorer](http://www.dps.tesoro.it/DPSExplorer)

 **Data accessibility: Open Data**

2007-2013 EU regulations require public data on beneficiaries but...


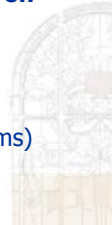
- ✓ Operational Programs solely focused on compliance with this aspect (61 percent)
- ✓ Operational Programs committed to making data accessible by non-technically oriented citizen (21 percent)
- ✓ Operational Programs focused on quality, openness and re-use of data (18 percent)

New regulation proposals for programming period 2014-2020:

- ✓ highlighting the importance not only of publishing information on interventions and beneficiaries of Structural Funds on the web, but also of the format in which such information is made available

**Short term goal: release the complete set of project-level data on projects financed by Regional devt. policy**

- ✓ Soon (!! ) available data from the central monitoring system
  - ✓ selection of data to make available (starting from EU Programs)
  - ✓ Open data license to be adopted
  - ✓ Publication on a data web site

 **We welcome international exchanges of experience and**

**THANK YOU**

tito.bianchi@tesoro.it  
simona.deluca@tesoro.it