



Impact of policy interventions on unemployment

Some observations from Poland

Paweł Penszko
ppenszko@pag-uniconsult.pl
PAG Uniconsult

Proiect co-finanțat din Fondul European de Dezvoltare Regională prin POAT 2007-2013

1



Sources

Study	Research Agency	Contracting Authority	Year	Progr. period
„Impact of the cohesion policy on the level and quality of employment in Poland” (ex post)	PAG Uniconsult	Ministry of Regional Development, Poland	2010	2004-2006
ESF Leavers Survey - „Evaluation of values achieved for result indicators of the regional component of the Human Capital Operational Programme” (on-going)	PAG Uniconsult	Ministry of Regional Development, Poland	2009-2012	2007-2013
„Towards Innovative Economy. Effects of Grants to Enterprises in Poland” (ex post)	Polish Agency for Enterprise Development		2009-2010	2004-2006

Proiect co-finanțat din Fondul European de Dezvoltare Regională prin POAT 2007-2013

2



3



4



Grants to enterprises


- Sectoral Operational Programme Improvement of the Competitiveness of Enterprises, Priority Axis 2
- Programming period 2004-2006
- Grants to enterprises:
 - investment grants
 - support for consultancy
- Effects 1 or more years after the project's conclusion

„Impact of the cohesion policy on the level and quality of employment in Poland”

„Towards Innovative Economy. Effects of Grants to Enterprises in Poland”

Proiect co-finanțat din Fondul European de Dezvoltare Regională prin POAT 2007-2013

5



Grants to enterprises

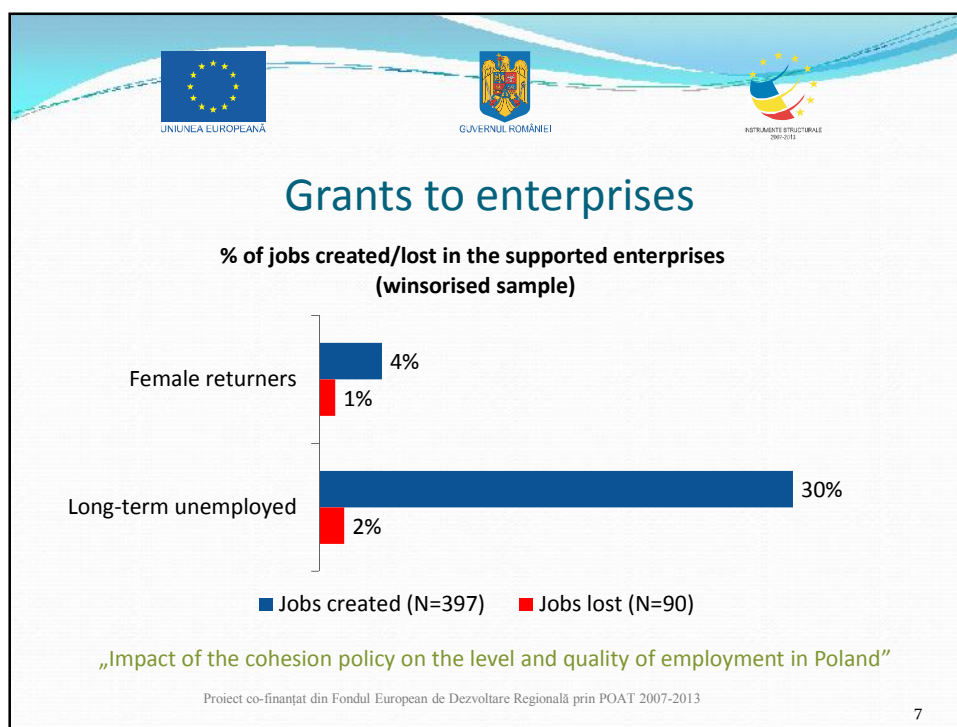
Study	Methodology	Net effect (per enterprise)
1	Questionnaire survey. „Subjectivist approach” Based on: <ul style="list-style-type: none"> ▪ entrepreneurs' declarations ▪ control group (correction for the deadweight effect) 	+7,61 jobs
1	Questionnaire survey, „Objectivist approach” Based on comparison with a control group	+7,12 jobs
2	Database analysis Control group, propensity score matching	+5 FTE (consultancy) + 14 FTE (investment)

1 „Impact of the cohesion policy on the level and quality of employment in Poland”

2 „Towards Innovative Economy. Effects of Grants to Enterprises in Poland”

Proiect co-finanțat din Fondul European de Dezvoltare Regională prin POAT 2007-2013

6



LESSONS LEARNT

- Grants to enterprises do create jobs for the unemployed
- The subjectivist approach should not be discarded (the subjectivist and objectivist approaches rendered similar results)

Proiect co-finanțat din Fondul European de Dezvoltare Regională prin POAT 2007-2013

8



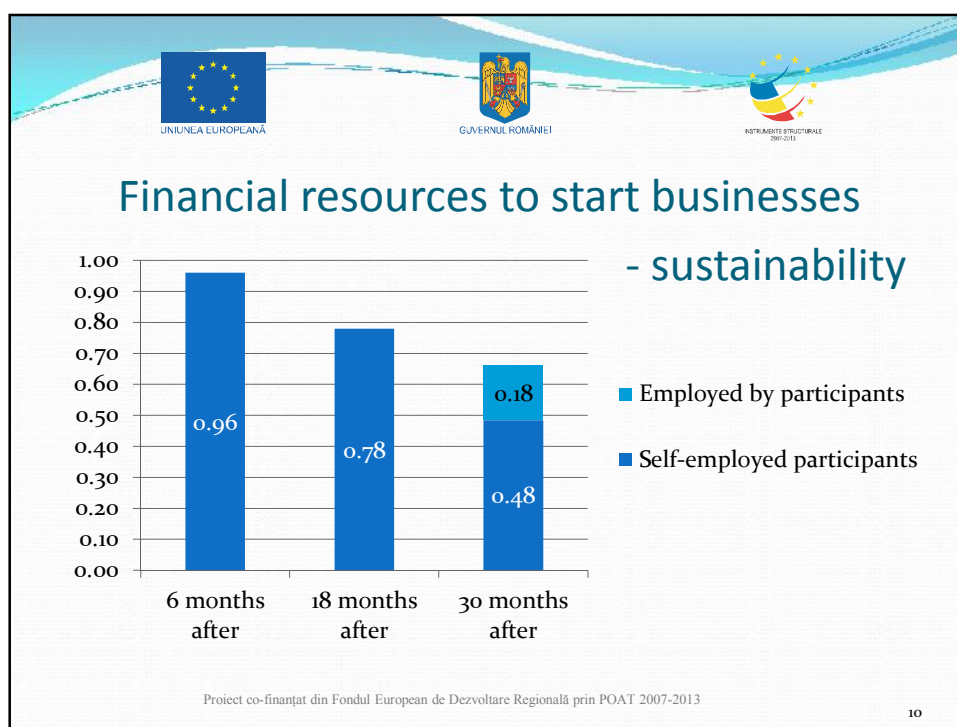
Financial resources to start businesses


- Human Capital Operational Programme, Sub-measure 6.1.3 / Measure 6.2
- Programming period 2007-2013
- Financial resources for the unemployed who want to start businesses (combined with other forms of support)
- Data source: CATI interviews with the participants
- Participants who left their projects in 2009 / 2011

ESF Leavers Survey - „Evaluation of values achieved for result indicators of the regional component of the Human Capital Operational Programme”

Proiect co-finanțat din Fondul European de Dezvoltare Regională prin POAT 2007-2013

9





Financial resources to start businesses - additionality

Estimate based on respondents' declarations:
87 %

Estimate based on comparison with project
participants who did not receive the financial
resources:
75%

Proiect co-finanțat din Fondul European de Dezvoltare Regională prin POAT 2007-2013

11



LESSONS LEARNT



- Financial resources for the unemployed to start their own businesses are very effective in the short run, but their effectiveness decreases over time
- The financial resources create jobs indirectly (for people employed by participants), but this effect is offset by the gradually declining survival rate of enterprises
- The additionality of this type of support seems to be high (75-87%)

Proiect co-finanțat din Fondul European de Dezvoltare Regională prin POAT 2007-2013

12










The supply side

Proiect co-finanțat din Fondul European de Dezvoltare Regională prin POAT 2007-2013

13

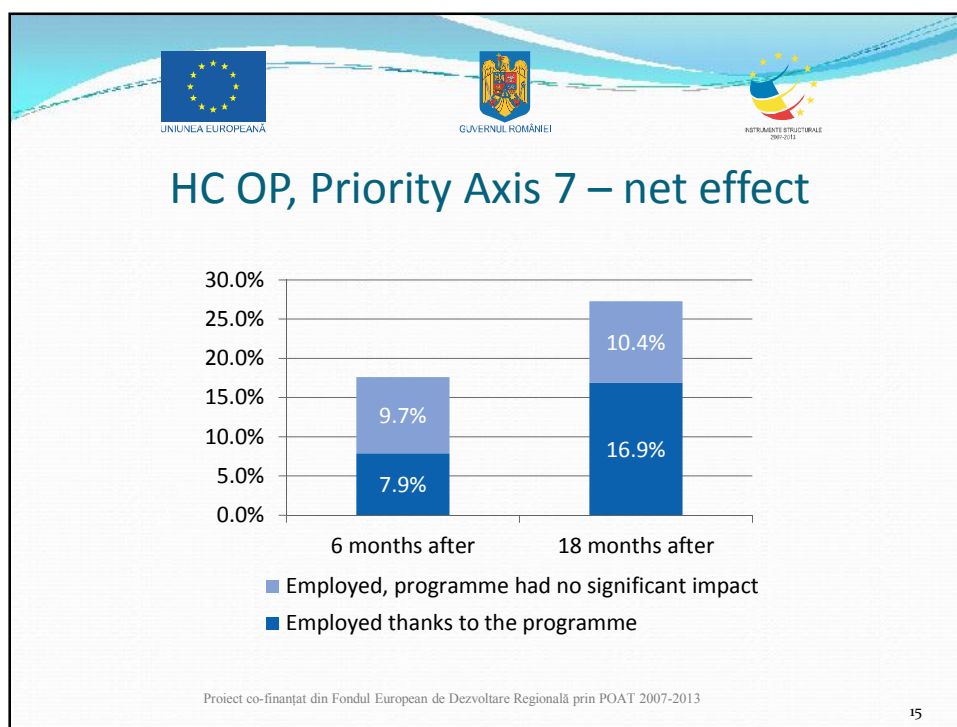
HC OP, Priority Axis 7 – net effect

- Human Capital Operational Programme, Priority Axis 7, aiming at social inclusion
- Programming period 2007-2013
- Participants: unemployed and inactive
- Data source: CATI interviews
- The respondents who moved into employment were asked to assess the impact of the programme. The category of „employed thanks to the programme” was identified basing on respondents’ declarations

ESF Leavers Survey - „ Evaluation of values achieved for result indicators of the regional component of the Human Capital Operational Programme”

Proiect co-finanțat din Fondul European de Dezvoltare Regională prin POAT 2007-2013

14



UNIUNEA EUROPEANĂ

GUVERNUL ROMÂNIEI

INSTRUMENTE STRUCTURALE 2007-2013

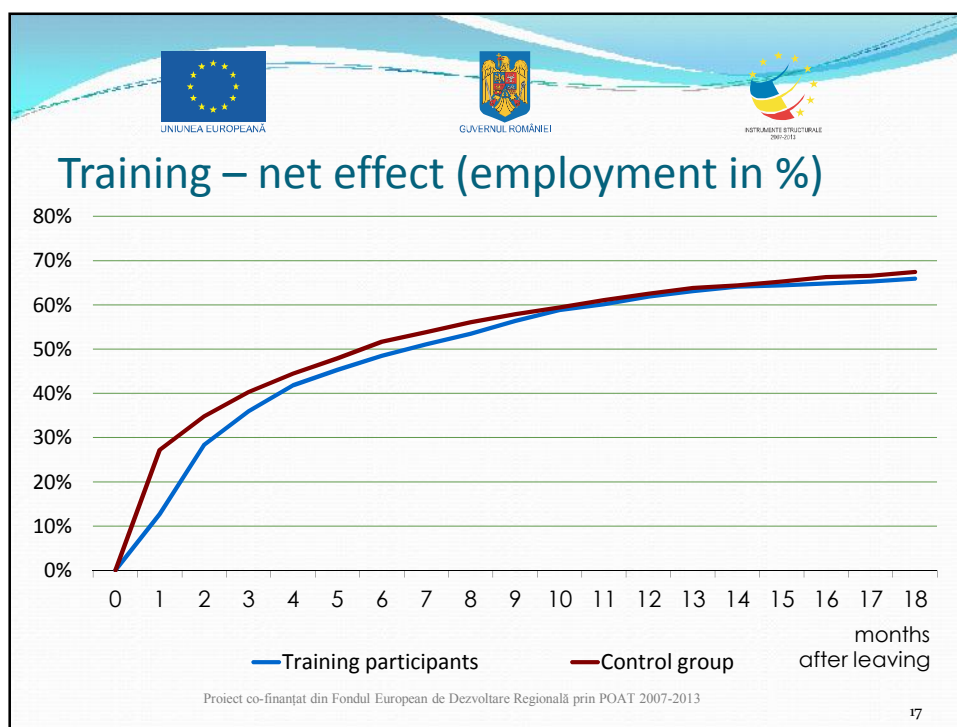
Training – net effect

- Training programmes for the unemployed
- Programming period 2004-2006
- Data source: databases of Powiat (County) Labour Offices
- Propensity score matching (PSM) method used to construct a comparison group of unemployed non-participants
- The treatment and comparison groups were balanced on 22 observable characteristics (e.g. gender, education level, lonely parent, unemployment duration, previous trainings, making compulsory visits to the labour office)

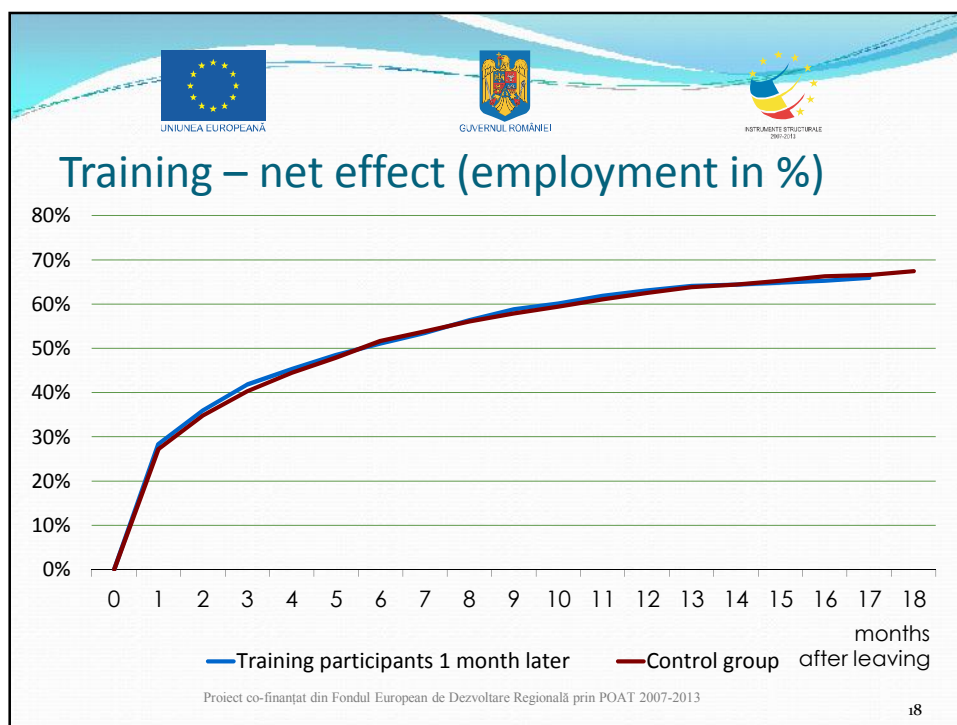
„Impact of the cohesion policy on the level and quality of employment in Poland”

Proiect co-finanțat din Fondul European de Dezvoltare Regională prin POAT 2007-2013



16



17



18


LESSONS LEARNT

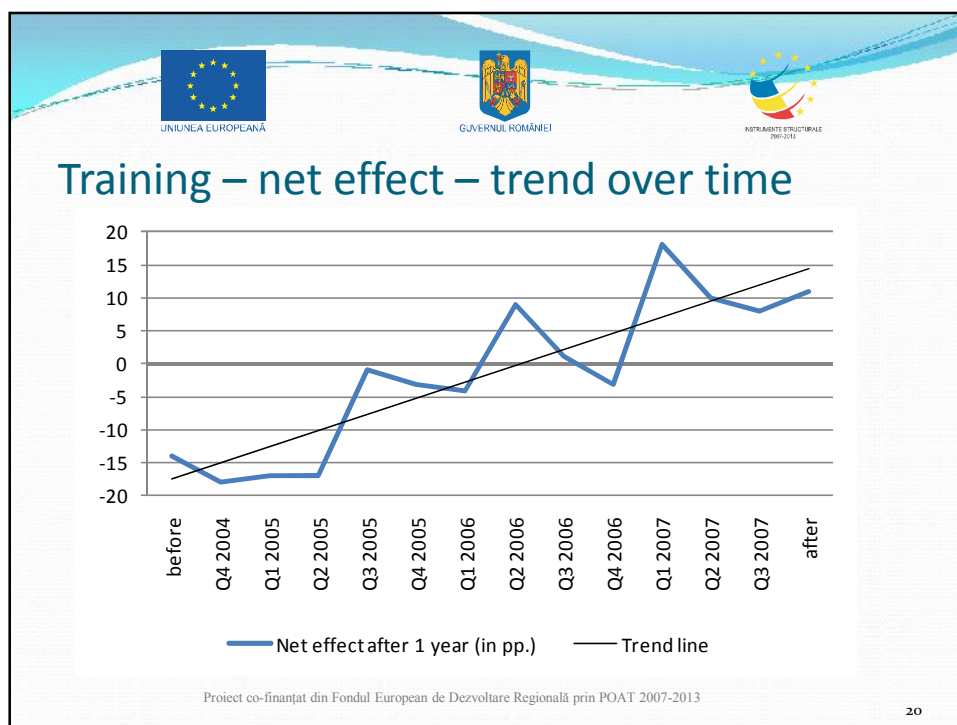


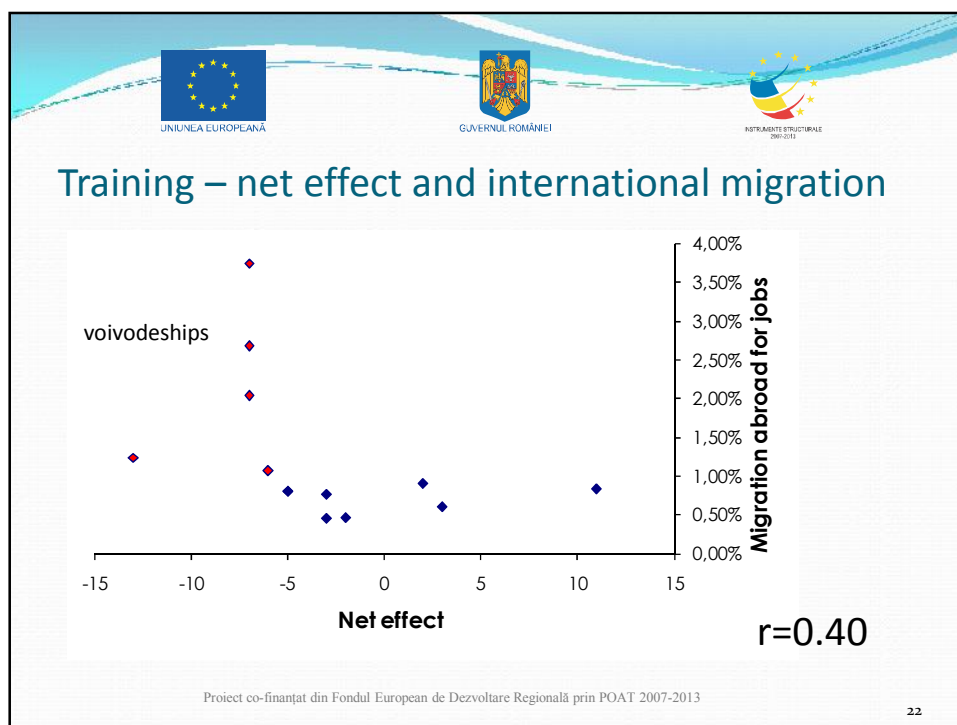
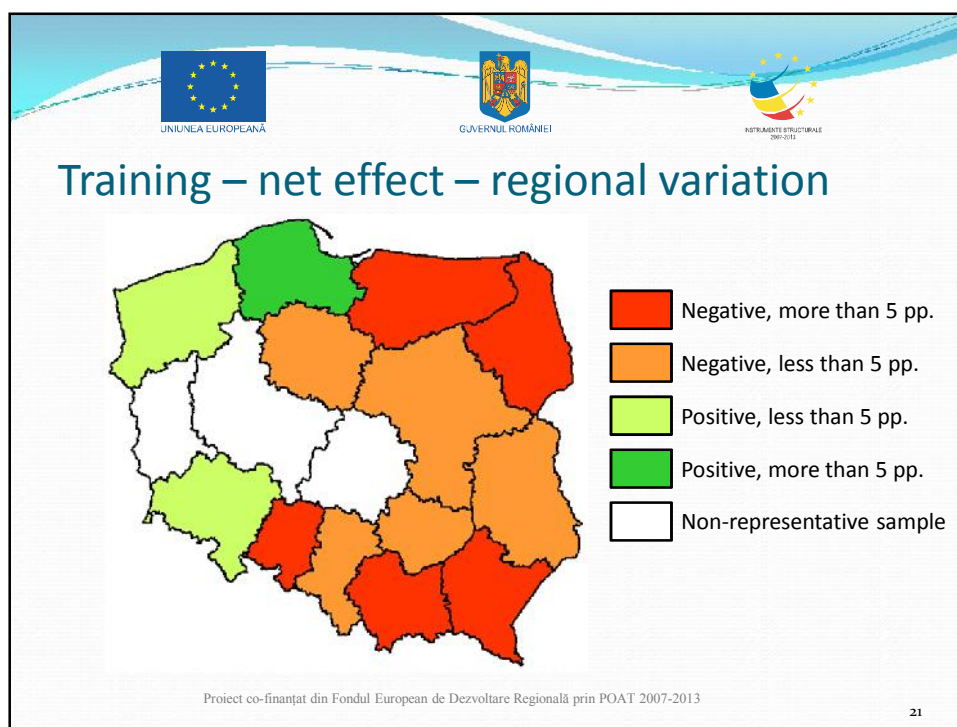
➤ Measuring the effects of ESF support for the unemployed only 6 months after the participants left their projects may give an incomplete or even distorted picture because of:

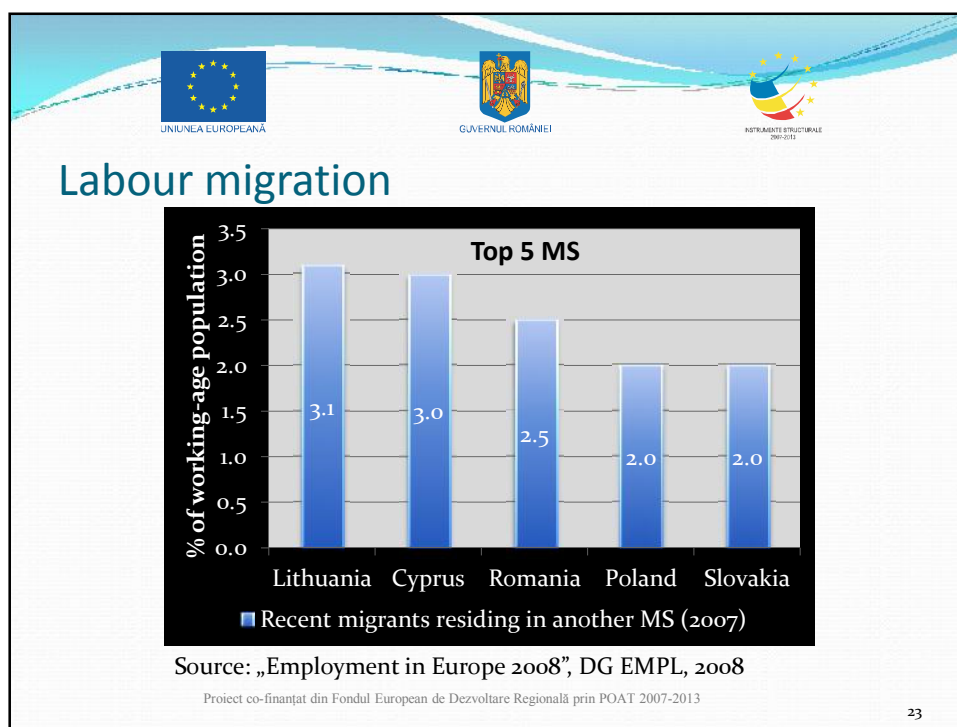
- long-term and delayed outcomes
- lock-in effect

Proiect co-finanțat din Fondul European de Dezvoltare Regională prin POAT 2007-2013

19







UNIUNEA EUROPEANĂ

GUVERNUL ROMÂNIEI




INSTRUMENTE STRUCTURALE 2007-2013

Why the mass labour migration can contribute to the observed negative net effect?


- Non-participants (the comparison group) were more likely to relocate abroad to work there
- Because of the methodology used, migrants were classified as employed (different than a questionnaire survey)
- The strategy of finding a job abroad might prove more successful than the strategy of participation in a training

Proiect co-finanțat din Fondul European de Dezvoltare Regională prin POAT 2007-2013

24

LESSONS LEARNT



- Net effect may vary over time and across regions
- Mass migration may be an important factor affecting the (observed) net effects

Proiect co-finanțat din Fondul European de Dezvoltare Regională prin POAT 2007-2013

25





Thank you for your attention!

Vă mulțumesc pentru atenție!

Questions?

Întrebări?



Proiect co-finanțat din Fondul European de Dezvoltare Regională prin POAT 2007-2013

26